

PRODUCT DATA SHEET

AMD SP5 Turin

Fully sealed liquid cold plate for AMD EPYC™ SP5 processor family

JetCool's SmartPlate™ cold plate is designed for AMD SP5 processors, including all Turin models up to 192 cores. Leveraging patented microconvective cooling technology, SmartPlate delivers targeted hotspot cooling and supports thermal loads exceeding 500W TDP. The result: industry-leading efficiency, higher compute density, and reliable performance for demanding workloads.

End-to-End Liquid Cooling Partner

JetCool delivers end-to-end liquid cooling solutions — all under one roof. From cold plates and CDUs to manifolds and quick disconnects, we simplify your path to liquid cooling at scale. From chip to grid, we help you deploy faster, scale smarter, and cool more efficiently — with one trusted partner.

Precision Cold Plates

CDUs

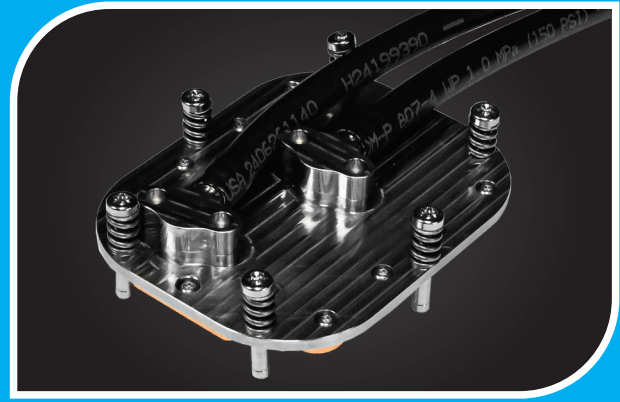
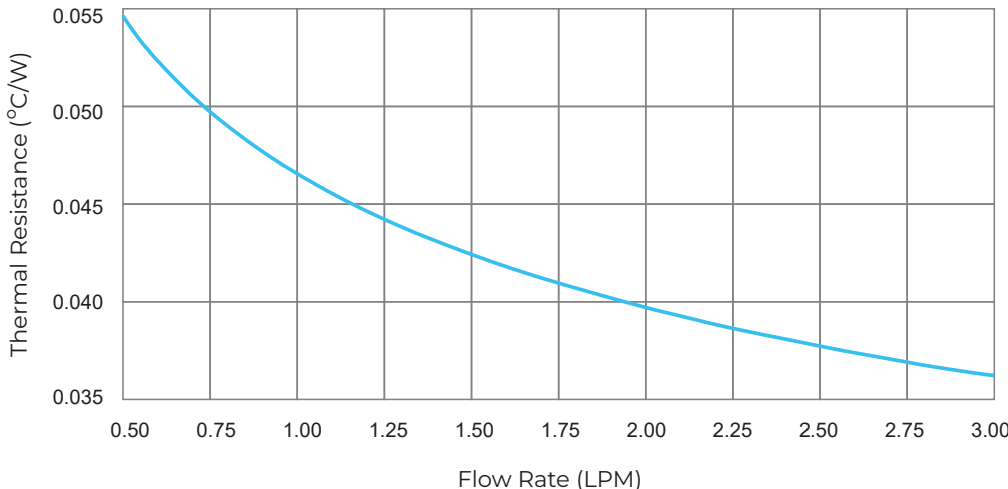
Manifolds

Quick Disconnects

Thermal Resistance

Junction to Fluid, PG25, 40°C Fluid Inlet

Tested on Dell PowerEdge R7725 with AMD SP5 9755 CPU



PRODUCT SPECIFICATIONS

Processor Socket	AMD SP5
L x W x H (mm)	117 x 92 x 28.16
Weight (Dry)	612 g
Fluid Inlet Temp.	18°C to 70°C
Operating Pressure (Cont.)	72 psi
Burst Pressure Withstand	216 psi
Design Fluid Flow Rate	0.75 LPM
Hose ID*	6.35 mm
Inlet / Outlet Fittings*	0.25 in Push-Lok

*Alternatives available on request

Flex & JetCool's Global Footprint

Americas

18M+
square feet

35+
locations

EMEA

11M+
square feet

35+
locations

Asia

19M+
square feet

40+
locations

Patented Technology, Additional Patents Pending.